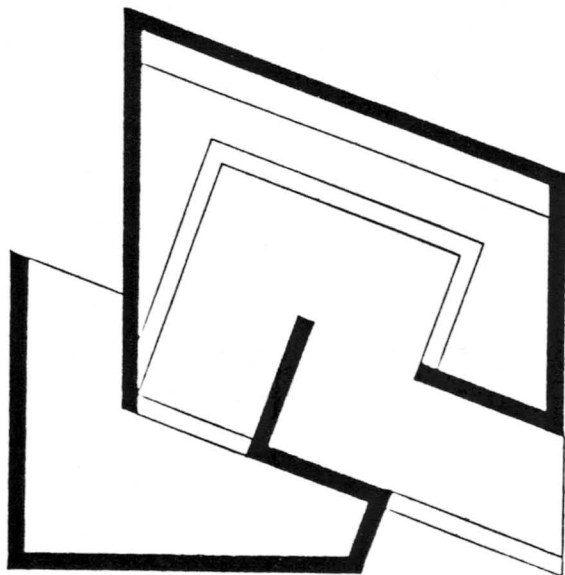
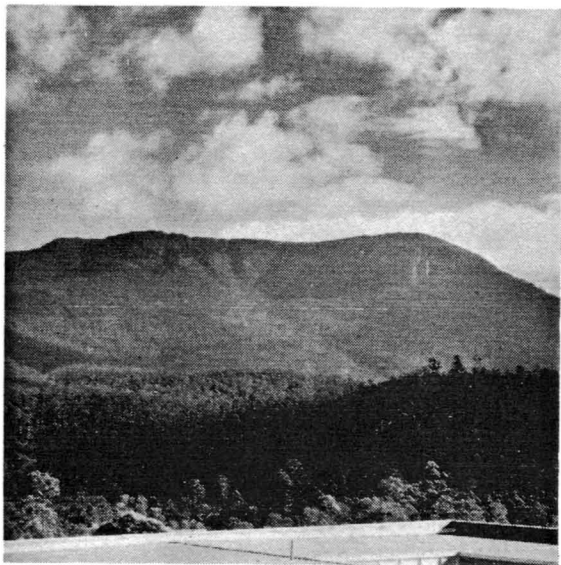


PAUL ZIKA

'PLACE OF CONTEMPLATION'
RELATED WORKS



The structure I am building on Mt. Nelson has evolved directly from my paintings and prints, but the wall has been replaced by the ground as the base plane and the dimensions increased; thus enabling the viewer to actually, rather than mentally, enter. There is still the exploration between real and illusionary space involving the viewer in a 'game of magic' but on a totally different scale.

There are strong connections with the exhibition 'A Place of Contemplation — architectural attitudes to space' (which I curated in 1983); particularly in the related works which seek to highlight aspects of the decision making process in the determining of place and the articulation of space. I have extended the exercise three dimensionally. Furthermore, the work reflects a long standing interest in architecture generally; and specifically funerary earthworks and religious structures, as well as the visual vocabulary which reduces the structure to a two dimensional flat projection.

The positioning of this contemplative and reflective place is critical, particularly in its relationship to Mt. Wellington and its placement within 'bushland'. The viewer enters the place by descending a ramp. From within, outward views are fragmented by angular planes — the only uninterrupted view is of Mt. Wellington via a mirror. The seated viewer is protected by a galvanized iron 'roof'; this surface also acting as a semaphore towards the mountain.

The related works are concerned with the development of the space itself, the location of that place, and the nature and influence of that environment in which it is placed. A number of references are critical to the works, for both their physical presence and the range of meanings they carry as signifiers. The monastic cloister is important both as an architectural element and as part of a complex religious ideology. Furthermore, the importance of that thought and imagery within our culture; and the 'being there' — placing the experience within a new time; re-evaluating it. At the same time being an intruder, a visitor, a foreigner. Closer to home, there is 'the mountain'; and as a counter balance, the airport. As you approach Hobart you suddenly come upon a panoramic view; the massive mountain confronts you — physically beautiful and yet an awesome ever-present symbol.

The 'Place of Contemplation' and related works are dedicated to the memory of my father who died earlier this year.

18th August — 1st September 1984

CHAMELEON

46 Campbell Street, Hobart.
Tuesday — Saturday: 10-4

PAUL ZIKA

Born 1949 in Albury, New South Wales.
Currently Lecturer, Tasmanian School of Art, University of Tasmania.

Studied

- 1968/71 Royal Melbourne Institute of Technology, Melbourne.
1973/74 St. Martins School of Art, London.

Individual Exhibitions

- 1973 Chapman Powell Street Gallery, Melbourne.
1977 Powell Street Gallery, Melbourne.
1982 University Fine Arts Gallery, Hobart.
1983 Christine Abrahams Gallery, Melbourne.

Selected Group Exhibitions

- 1970 *Eight Students from Victoria*, Rudy Komon Gallery, Sydney.
1971 *Student Printmakers*, Print Council of Australia. Travelling Exhibition.
1973/84 Print Council of Australia Travelling Exhibitions.
1977 *George Crouch Jubilee Invitation Exhibition* Ballarat Fine Art Gallery, Victoria.
1980 *Australian Prints – Sweden.*
Works by Lecturers from the Tasmanian School of Art 1980, Tasmanian School of Art Gallery.
Recent Tasmanian Sculpture and Three Dimensional Art, Fine Art Gallery University of Tasmania and Tasmanian School of Art Gallery, Hobart.
Queen Victoria Museum and Art Gallery, Launceston.
1982 *Australian Screenprints 1982.*

Collections

Artbank
Ballarat Fine Art Gallery
Geelong Art Gallery
Hemisphere Commonwealth Department of Education
National Bank of Australia
Print Council of Australia
Royal Melbourne Institute of Technology
State College of Victoria – Hawthorn
Tasmanian Museum and Art Gallery
University of Melbourne
University of Tasmania
Victorian Ministry for the Arts

Bibliography

- Max Germaine: *'Artists and Galleries of Australia and New Zealand'*, Sydney, 1980.
Jonathan Holmes: *'Island Imagery, Other Imagery'*, *Australian Art Review* 2, Melbourne, 1983.
John Lewis: *Paul Zika, Paintings and Prints*, (Exhibition Catalogue), Hobart, 1982.
Paul Taylor: *'Recent Tasmanian Sculpture and Three Dimensional Art'*, (Exhibition Catalogue), Hobart, 1980.
Lillian Wood (ed.): *'Directory of Australian Print-makers'*, Melbourne, 1976. Republished 1983.

Catalogue

- Working drawing for screenprint 1–82**
1983
Acrylic paint and pencil on paper
50.5 x 37.5
- 1–82**
1983
Screenprint on paper
Print Council of Australia Member Print 1983
50.5 x 37.5
- Working drawing for PLACE OF CONTEMPLATION**
1983
Enamel paint and pencil on dyeline paper (laminated)
59 x 76.5
- Scale model for PLACE OF CONTEMPLATION**
1983
Cardboard, cotton towelling, acrylic and enamel paint, mirror
Scale 1:10
30 x 30 x 33
- The Cloister**
1983-84
Cardboard and paper, photographs, photostats on acetate and paper, plastic, postcards
Variable dimension: 17 units, each 31.5 x 23
14 units, each 43 x 31
- The Cloister (Book)**
1983-84
Cardboard and paper, photographs, photostats on acetate and paper, plastic
A4 format
48 pages
- The Mountain – with the view as you approach from Hobart Airport as reference**
1983-84
Cardboard, colour photographs, maps, markerpen, plastic
Variable dimension: 1 unit, 31 x 253
1 unit, 132 x 143
1 unit, 81 x 52
- The Mountain – with the view as you approach from Hobart Airport as reference (Book)**
1983-84
Cardboard, colour photographs, maps, markerpen, photostats, plastic
A3 format
14 pages
- Black Australia/White Australia**
1983-84
Colour photographs, newspaper and photostat
2 panels each 65 x 42
- 12/11/83**
1984
Screenprint on paper
76 x 51
- Brown, Pink, Silver and Yellow Horizontal/Vertical**
1984
Bricks, enamel paint on wood, mirror
300 x 300 x 115
- Documentation of PLACE OF CONTEMPLATION (Incomplete)**
1984
Map: 42 x 30
Photographs: 30 x 21
Photographs by John Farrow.

Measurements are in centimetres, height then width and depth.